

you can  
**Canon**

**MS300 / MS350**  
digital microfilm scanners

*Switch to affordable, efficient  
digital microfilm scanning*



OFFICIAL PARTNER



## *Fully featured microfilm scanning with reader/printer functionality*

Take advantage of enhanced scanning efficiency and affordable performance with Canon's MS300 digital microfilm scanner. Or take productivity even further with the MS350 - offering motorised focus and zoom rotation. Compact and user friendly, each provides a full reader/printer capability plus a rich range of innovative features. Ideal for extensive applications, the MS300/MS350 are ready to meet your most demanding needs, while ensuring easy integration into your existing digital environment.



#### DESKTOP DIGITAL SCANNING

The MS300/MS350 are the key to improving and fully integrating your entire document management systems. With these high-performance, digital desktop scanners, you benefit from enhanced microfilm storage. Each unit is capable of scanning all types of microfilm, including ANSI/3M cartridges, 16/35 mm roll film, fiche/jackets and aperture cards. Plus standard utility software provides a wide range of practical user functions.

#### READER/PRINTER CAPABILITY

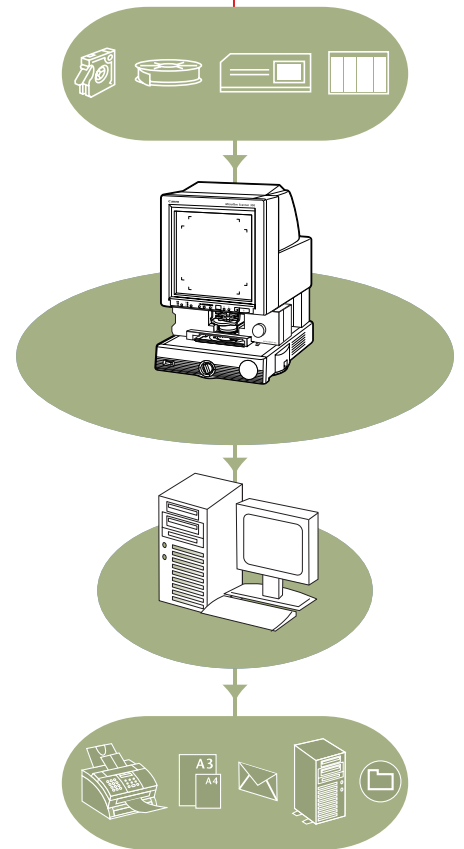
What makes both the MS300 and MS350 invaluable is that they offer far more than just flexible microfilm scanning. When connected to a PC, they perform exactly the same functions as a reader/printer. Either a local or network printer can be used for up to A3 hard copy output (dependent on cassette sizes available).

#### HIGH QUALITY SCANNING

Benefit from a high optical resolution that reaches right up to 600 x 600 dpi. However a variety of output resolutions are available depending on the required application (600 x 600, 400 x 400, 300 x 300 and 200 x 200 dpi). Furthermore, 8-bit greyscale scanning is available to provide high quality scanning for images. Simply select the ideal scanning resolution and scanning mode - to ensure clarity for even the most detailed archive documents.

#### HIGH SCANNING SPEED

Now you can convert microfilm to digital data rapidly. Scanning speed is 5.5 seconds per frame at 200 dpi, 7.5 seconds for 300 dpi, 10 seconds for 400 dpi and 16 seconds for 600 dpi. All to increase productivity and enable you to get through more work in less time.

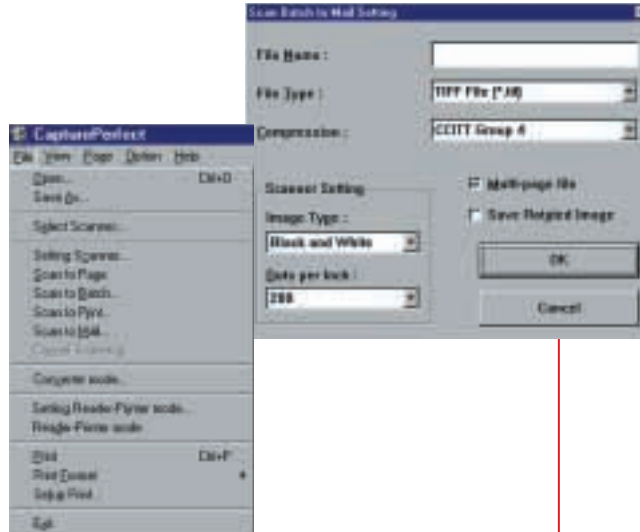


## SCAN TO MAIL AND PDF FILES

Powerful utility software CapturePerfect is included with the MS300/MS350 - offering you extensive scanning and saving functions. With 'Scan Batch to Mail', scanned images can be instantly attached to a new message for multiple sending, using your existing mail program. Also scanned images can be saved in PDF format - in high compression or standard mode.

## ADDITIONAL SCANNING UTILITIES

CapturePerfect also provides a wide range of time-saving, cost-cutting functions, along with the standard TWAIN driver. These include user preference settings, a text enhancement mode for increased legibility, a convenient Scan Panel on your PC screen and a Pre-Scan mode. Other functions range from skew correction and auto detection to border removal and optimum viewer settings. All to help maximise image quality while also ensuring overall ease of use.



## SIMPLIFIED OPERATION

The large and clear control panel of these scanners allows you to carry out even the most complex operations with ease. Its user-friendly design ensures that each function is distinctly shown, for easy, error-free use.

## FULL SIZE A4 SCREEN

Take advantage of a full size A4 screen, so reading and working with documents is extra easy on your eyes. Manual focus and zoom (MS300) and motorised focus and zoom (MS350) make even the most detailed images and the finest text crystal clear. Just place the compact unit on your desk... and you'll find it a pleasure to use.





#### EXTENSIVE APPLICATIONS

The versatile design and flexible features of these scanners make them suitable for a wide range of applications. With superior microfilm scanning of source documents, they're ideal for use in the manufacturing industry - as well as for libraries and government institutions.

What's more, with their ability to handle typical cheque film formats, they're also perfect for banks and financial institutions.

#### OPTIONAL FILEPRINT PRINTERS

Add Canon's FilePrint 450 or 250 desktop printer to the MS300/MS350 for a complete scanning system with stand-alone printing. The FilePrint 450 prints at up to 10 ppm (A4) up to an A3 size. While the FilePrint 250 prints at up to 8 ppm, up to an A4 size.

#### CONVENIENT MEDIA CONVERSION

Another invaluable function is the ability to carry out media conversion from microfilm to other media. This mode enables easy and automatic scanning of filmed images after retrieving images with film addresses - complete with image processing, saving and automatic indexing.\* Thus synchronising film forwarding with scanning, to open up a whole new range of opportunities.

*\* only available with optional FS Controller*

#### ECONOMICAL ENERGY SAVING

An economical power save mode keeps your running costs to a minimum. This can be easily set to switch on automatically - either after 15 minutes or one hour of the unit not being in use. With, of course, automatic restoration of full power the moment the scanner is operated.

#### OPTIONAL FS CONTROLLER

Canon's optional FS Controller III is the perfect partner for the MS300/MS350, to enhance overall efficiency. It features an ergonomic and 'interactive' keyboard. Fully automatic search and retrieval functions are also available - as well as a range of advanced memory-printing features. Providing your company with unparalleled efficiency and productivity in microfilm management.



# MS300 / MS350 Specifications

Main Unit	
Type	Desktop digital microfilm scanner
Screen size	300 (H) x 300 (W) mm
Scanning method	600dpi digital scanning by CMOS CIS
Film polarity detection	Negative, Positive, Nega/Posi auto switching
Lens magnification	7X, 9.5-16X, 16-32X, 30-55X, 10-24X
Light source	Halogen lamp (20V 150W)
Power requirement	220-240V, 50/60Hz, 1.2A
Acoustic noise level	Less than 66dB
Work environment	10 - 32.5C 10-80%RH
Dimensions	442 (W) x 541 (D) x 668 (H) mm
Weight	Approx. 26kg
Film	
Film types	Silver film, Diazo film (blue/black)
Base density	0.6 to 1.4 for negative, 0.3 or less for positive
Scanning	
Scanning sizes	A4, B5
Density Control	AE, Manual
Scanning modes	B/W, Error Diffusion, Text Enhanced, 256-level greyscale
Resolution	200dpi, 300dpi, 400dpi, 600dpi
Scanning option	Border Removal, Trimming, Centering, Full Framing, Automatic Page Size Detection, Deskew, User Preference, Prescan, Scan Panel, Multiprint (up to 99)
Image adjustment	Edge emphasis, Noise removal, Erase notch, Deskew, Gamma compensation
Bundled driver	ISIS/TWAIN driver
Scanning speeds (A4)	5.5 sec. (200dpi), 7.5 sec. (300dpi), 10.0 sec. (400dpi), 16.0 sec. (600dpi)
Image adjustment	
Focus	Manual (MS300) Motorised (MS350)
Zoom	Manual (MS300) Motorised (MS350)
Rotation	Manual (MS300) Motorised (MS350)
Options	
Fixed lens	E x 7 (MS300) H x 7 (MS350)
Zoom lenses	MS300 - EZ01 (9.5-16X), EZ02 (16-32X), EZ03 (30-55X), EZ04 (10-24X) MS350 - HZ01 (9.5-16X), HZ02 (16-32X), HZ03 (30-55X), HZ04 (20-48X), HZ05 (10-24X)
Film Carrier	FC190RII, AC100R, AC100C, AC100M, RFC200, FSC-I, FSC-III

Installation KitM	Required to install all carriers except FC190RII and FSC-III
DMP Board	Required to connect optional FP250/FP450
Framing Kit	Required for frame scanning/printing
CapturePerfect	
Page sizes	MS300 - A4, B5, Scanner's maximum, Framing, Auto-detection, Auto-detect with margin MS350 - A4, A4R, B5, B5R, Scanner's maximum, Framing, Auto-detection, Auto-detect with margin
Functions	Scan to mail, Scan to batch, Converter mode, Scan to print, Reader-Printer mode, Rotated image save, Multi scanner
File formats	TIFF, JPEG, PDF, BMP
Viewing functions	Zoom In/Out, Rotate Left/Right, Best Fit, Fit to Width, Next Page, Previous Page, Go to Page
Printing functions	Actual size, Fit paper, Actual pixels
Optional Printer FP450	
Type	Desktop
Print speed (A4)	10ppm
First print time (A4 Portrait)	Approx. 14sec (High speed mode/300dpi)
Warm-up time	9sec or less
Dot pitch	600 x 600 dpi
Print paper size	A3/A4/A4R/A5/B4/B5
Paper cassette	250sheets (500 paper cassette: Option)
Output stacker	250sheets
Cartridge	FP Cartridge 400
Dimensions (W x D x H)	490 x 502 x 300 mm
Weight (without cartridge)	23kg
Optional Printer FP250	
Type	Desktop
Print speed (A4)	8ppm
First print time (A4 Portrait)	Approx. 20sec (High Speed mode/300dpi)
Warm-up time	9sec or less
Dot pitch	600 x 600 dpi
Print paper size	A4/B5
Paper cassette	125sheets(Paper tray)
Cartridge	FP Cartridge 250
Dimensions (W x D x H)	345 x 312 x 267 mm (Without paper tray)
Weight (without cartridge)	6.4kg

<sup>TM</sup>All company and/or product names are trademarks and/or registered trademarks of their respective manufacturers in their markets and/or countries. Canon reserves the right to change specifications without notice.



you can  
**Canon**

**Canon Electronics Inc.**  
1248, Shimokagemori, Chichibu-shi, Saitama  
369-1892, Japan  
[www.canon-elec.co.jp](http://www.canon-elec.co.jp)

Europe, Africa and Middle East  
**Canon Europa N.V.**  
P.O. Box 2262, 1180 EG Amstelveen,  
the Netherlands  
[www.canon-europe.com](http://www.canon-europe.com)

**Canon (U.K.) Limited**  
Woodhatch, Reigate  
Surrey RH2 8BF  
Telephone No: 08000 353535  
Facsimile No: 01737 220022  
[www.canon.co.uk](http://www.canon.co.uk)



English Edition 0040W399  
© Canon Europa N.V., 2002 (1003)