

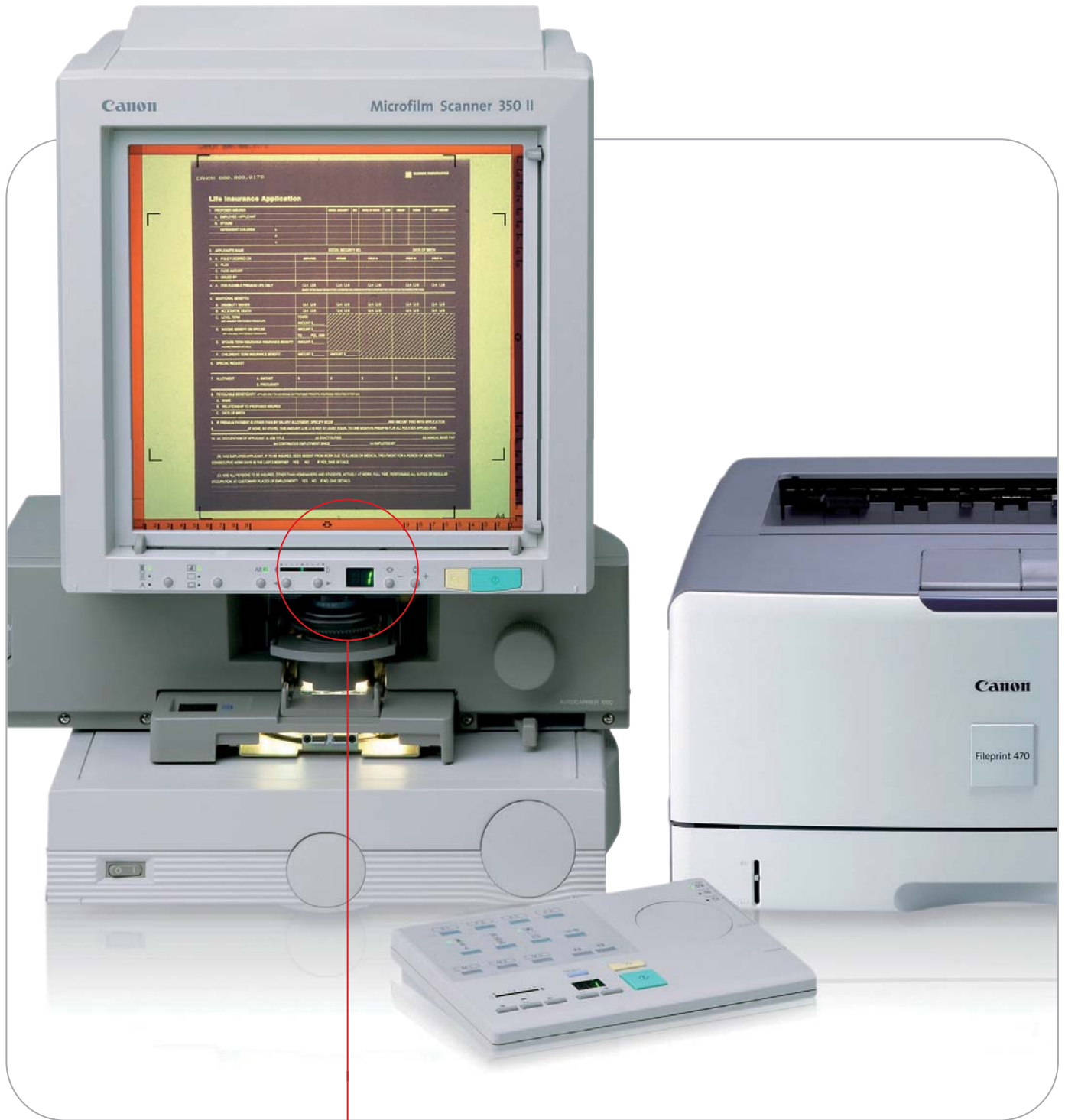
you can
Canon

MS300II / MS350II
Digital Microfilm Scanners

Switch to affordable, efficient
digital microfilm scanning

MS300II / MS350II





Canon

Microfilm Scanner 350 II

CANON 6000-9000-9170

Life Insurance Application

1. PERSONAL INFORMATION

NAME	DATE OF BIRTH	SEX	AGE	STATUS
ADDRESS				

2. POLICY INFORMATION

POLICY NUMBER	ISSUE DATE	TERMINATION DATE

3. MEDICAL INFORMATION

PREVIOUS MEDICAL HISTORY	DATE OF ONSET

4. DECLARATION

I hereby declare that the information furnished herein is true and correct to the best of my knowledge and belief.

Canon

Fileprint 470

Take advantage of enhanced scanning efficiency and affordable performance with Canon's MS300II digital microfilm scanner. Or take productivity even further with the MS350II – offering motorised focus and zoom rotation. Compact and user friendly, each provides a full reader/printer capability plus a rich range of innovative features. Ideal for extensive applications, the MS300II/MS350II are ready to meet your most demanding needs, while ensuring easy integration into your existing digital environment.

Fully featured microfilm scanning with reader/printer functionality

Desktop digital scanning

The MS300II/MS350II are the key to improving and fully integrating your microfilm archives into your entire document management systems. With these high-performance, digital desktop scanners, you benefit from both computer database and enhanced microfilm storage. The MS300II/MS350II, with the available film carriers, are capable of scanning all types of microfilm, including ANSI/3M cartridges, 16/35 mm roll film, fiche/jackets and aperture cards. Plus the bundled CapturePerfect software provides a wide range of practical user functions.

Reader/printer mode

What makes both the MS300II and MS350II invaluable is that they offer far more than just flexible microfilm scanning. In Reader-Printer mode, you simply push the Start button and data is transferred directly to a network printer. The printer can either be local, or your network printer and can be used for full A3 and A4 hard copy output (dependent on cassette sizes available). Also, when in reader/ printer mode, you still operate the application software fully independently of your PC.

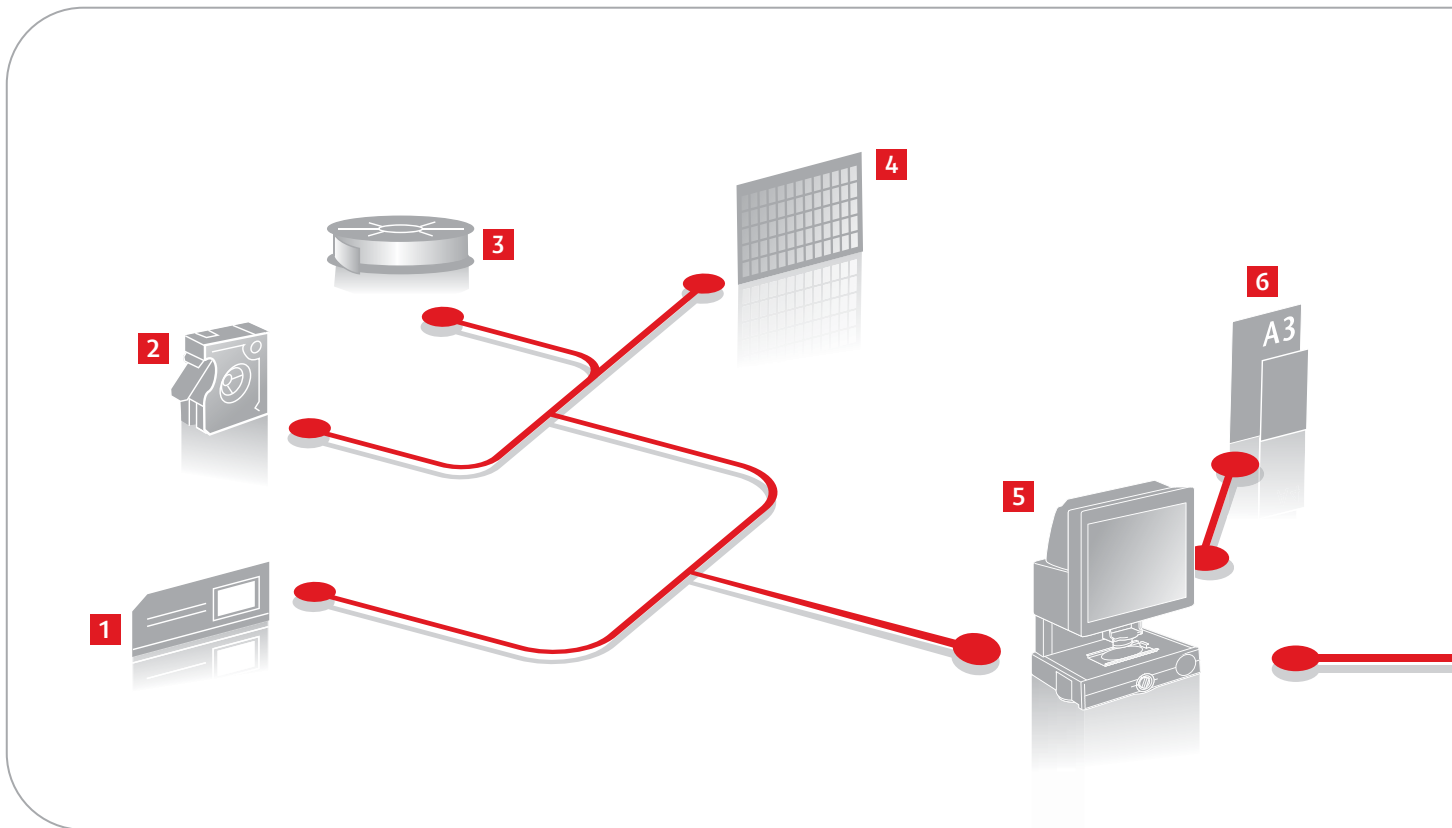
High quality scanning

The MS300II/MS350II scan at an optical resolution of 600 dpi ensuring high quality images. However a variety of output resolutions are available depending on the required application – including 200/300/400/600 dpi. Furthermore, 8-bit greyscale scanning is available as standard to provide high quality scanning for your analog archives. Simply select the ideal scanning resolution – to ensure clarity for even the most detailed archive documents.

High scanning speed

Now you can convert microfilm to digital data rapidly. Scanning speed is 5.5 seconds per frame at 200 dpi, 7.5 seconds for 300 dpi, 10 seconds for 400 dpi and 16 seconds for 600dpi. All to increase productivity and enable you to get through more work in less time.

Ready to meet your most demanding needs, while ensuring easy integration into your existing digital environment.

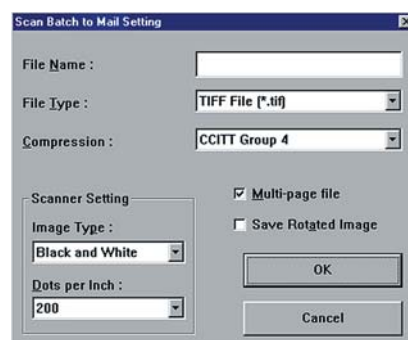


Scan to mail and PDF files

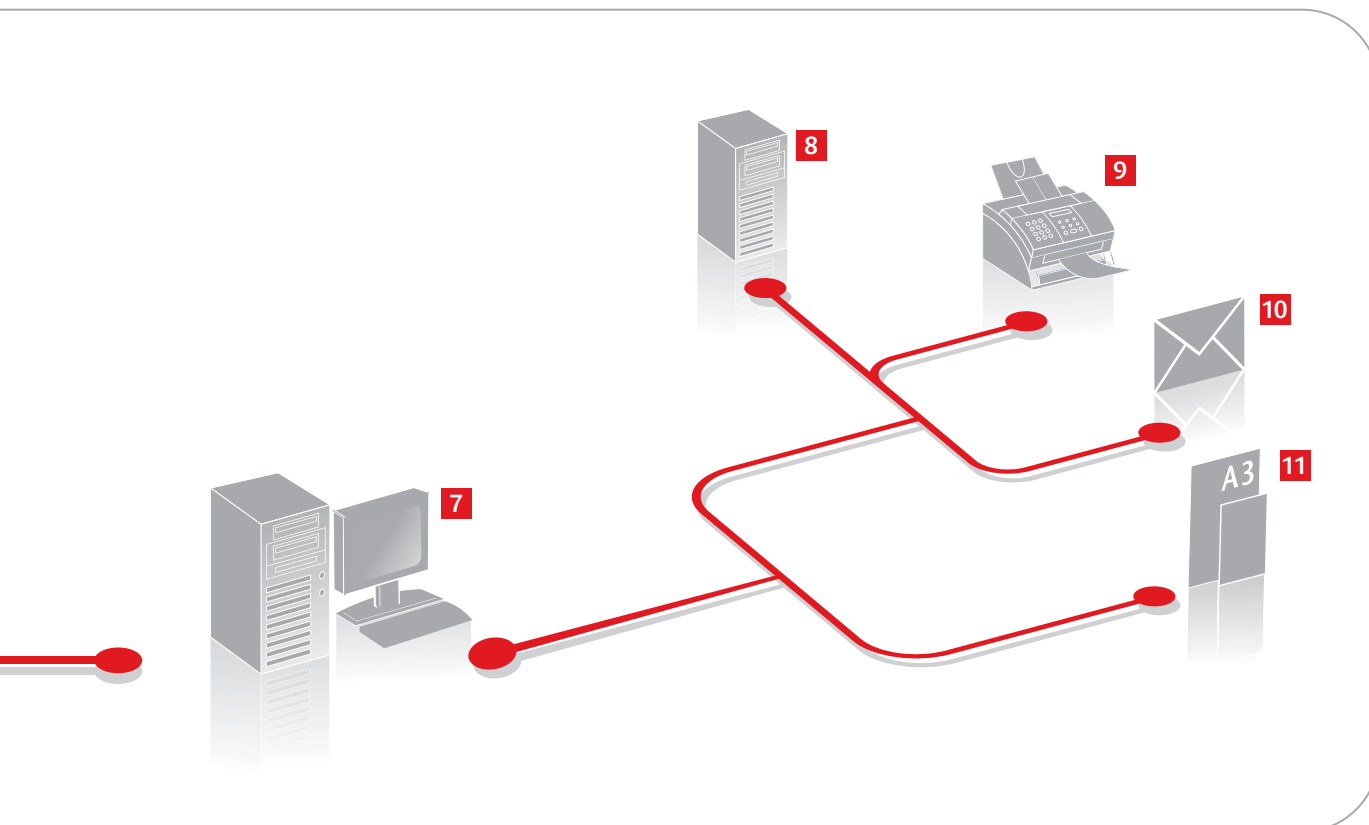
Powerful utility software CapturePerfect is included with the MS300II/MS350II – offering you extensive scanning and saving functions. With 'Scan Batch to Mail', scanned images can be instantly attached to a new message for multiple sending, using your existing mail program. Also scanned images can be saved in PDF format – in high compression or standard mode.



CapturePerfect



Scan batch to mail



Extensive Applications

The versatile design and flexible features of these scanners make them suitable for a wide range of applications. With superior microfilm scanning of source documents, they're ideal for use in the manufacturing industry - as well as for libraries and government institutions. What's more, with their ability to handle typical cheque film formats, they're also perfect for banks and financial institutions.

- | | |
|--|---------------------------------|
| 1 Aperture Card | 6 High Speed LaserPrint |
| 2 16mm Rollfilm Cartridges (ANSI / 3M-Type) | 7 Scanner PC Workstation |
| 3 Open Spool 16mm / 35mm Rollfilm | 8 Scan-to-File |
| 4 Microfiche | 9 Scan-to-Fax |
| 5 Digital Microfilm Scanner | 10 Scan-to-Mail |
| | 11 Scan-to-Print |

Simplified operation



A large and clear control panel allows you to carry out even the most complex operations with ease. Its user-friendly design ensures that each function is distinctly shown, for easy, error-free use.

Versatile Connectivity

MS300II/MS350II offers a dual interface design via USB 2.0 or SCSI-3 making connectivity that much easier and versatile.

Full size A4 screen

Take advantage of a full size A4 screen, so reading and working with documents is extra easy on your eyes. Manual focus and zoom (MS300II) and motorised focus and zoom (MS350II) make even the most detailed images and the finest text crystal clear. Just place the compact unit on your desk... and you'll find it a pleasure to use.

Optional FilePrint printers

Add Canon's FilePrint 470 or 270 desktop printer to the MS300II/MS350II for a complete scanning system with stand-alone printing. The fileprint 470 offers A3-size printing and its 250 sheet paper supply can be expanded to 500 sheets using the optional cassette. The fileprint 270 is a compact A4 size printer with a 150 sheet paper supply cassette.

Convenient media conversion

Another invaluable function is the ability to carry out media conversion from microfilm to other media. This mode enables easy and automatic scanning of filmed images after retrieving images with film addresses - complete with image processing, saving and automatic indexing.* Thus synchronising film forwarding with scanning, to open up a whole new range of opportunities.

Economical energy saving

An economical power save mode keeps your running costs to a minimum. This can be easily set to switch on automatically - either after 15 minutes or one hour of the unit not being in use. With, of course, automatic restoration of full power the moment the scanner is operated.

Optional FS Controller

Canon's optional FS Controller I is the perfect partner for the MS300II/MS350II, to enhance overall efficiency. It features an ergonomic and 'interactive' keyboard. Fully automatic search and retrieval functions are also available - as well as a range of advanced memory-printing features. Providing your company with unparalleled efficiency and productivity in microfilm management.

Ideal for use in the manufacturing industry - as well as for libraries and government institutions.

* only available with optional FS Controller.



Optional FS Controller I

Specifications MS300II / MS350II

Main unit	Desktop digital microfilm scanner Type Screen size 300mm (H) x 300mm (W) Scanning method 600dpi digital scanning by CMOS CIS Film polarity detection Negative to Positive, Positive to Positive, Automatic Lens magnification 7X, 9.5-16X, 10-24X, 16-32X, 30-55X, 10-24X Light source Halogen lamp (20V 150W) Interface USB 2.0 & SCSI III Bundled Software ISIS/TWAIN drivers, Capture Perfect 1.0 Power requirement 220-240V AC, 50/60Hz, 1.2A Acoustic noise level Less than 66dB Work environment 10 - 32.5C 10-80%RH Dimensions 442 (W) x 541 (D) x 668 (H) mm Weight Approx. 26kg
Film	Film types Fiche, jacket, aperture card 16mm/35mm rollfilm
Scanning	Scanning sizes A4, B5 Density Control AE (Automatic Exposure), Manual Scanning modes Black and White, Error Diffusion, Text Enhanced, Grayscale Resolution 200dpi, 300dpi, 400dpi, 600dpi Scanning option Border Removal, Trimming, Centering, Full Framing, Automatic Page Size Detection, Deskew, User Preference, Prescan, Scan Panel, Multiprint (up to 99) Image adjustment Edge emphasis, Noise removal, Erase notch, Gamma compensation Scanning speeds (A4) 5.5sec. (200dpi), 7.5sec. (300dpi), 10.0sec. (400dpi), 16.0 sec. (600dpi)
Image Adjustment	Focus Manual (MS300II) Motorised (MS350II) Zoom Manual (MS300II) Motorised (MS350II) Rotation Manual (MS300II) Motorised (MS350II)
Options	Fixed lens E x 7 (MS300II) H x 7 (MS350II) Zoom lenses MS300II - EZ01 (9.5-16X), EZ02 (16-32X), EZ03 (30-55X), EZ04 (10-24X) MS350II - HZ01 (9.5-16X), HZ02 (16-32X), HZ03 (30-55X), HZ04 (20-48X) Film Carriers FC190RII - Fiche Carrier for Microfiche/Jackets/Aperture Cards AC100C - Automatic Carrier for 16mm ANSI/3M-Type Cartridge Rollfilm RFC200 - Roll/Fiche Carrier for 16mm/35mm Open Reel Film, 3M Type Cartridge and Microfiche, Jacket and Aperture Card FS Controller I - for automated retrieval and searching of blipped microfilm Installation Kit Q Required to install all carriers except FC190RII and FSC-I DMP Board Required to connect optional FP270/FP470 Framing Kit Required for manual frame scanning/printing Other Operation Keyboard standard for MS350II (Not optional for MS300II)

CapturePerfect	Page sizes MS300II - A4, B5, Scanner's maximum, Framing, Auto-detection, Auto-detect with margin MS350II - A4, A4R, B5, B5R, Scanner's maximum, Framing, Auto-detection, Auto-detect with margin Functions Scan to mail, Scan to batch, Converter mode, Scan to print, Reader-Printer mode, Rotated image save File formats TIFF, JPEG, PDF, BMP Viewing functions Zoom In/Out, Rotate Left/Right, Best Fit, Fit to Width, Next Page, Previous Page, Go to Page Printing functions Actual size, Fit paper, Actual pixels
Optional Printer FP470	Desktop Laser Printer Type Print speed (A4) 12ppm First print time(A4 Portrait) Approx. 13sec (High speed mode/300dpi) Warm-up time 0 sec Dot pitch 600 x 600dpi Print paper size A3/A4R/B4/B5 Paper cassette 250 sheets (500 paper cassette: Option) Output stacker 250 sheets Cartridge FP Cartridge 470 Dimensions (W x D x H) 518 x 439 x 277mm Weight (without cartridge) 19.3kg
Optional Printer FP270	Desktop Laser Printer Type Print speed (A4) 12ppm First print time (A4 Portrait) Approx. 15sec (High Speed mode/300dpi) Warm-up time 0 sec Dot pitch 600 x 600dpi Print paper size A4/B5 Paper cassette 150 sheets (Paper tray) Cartridge FP Cartridge 270 Dimensions (W x D x H) 370 x 251 x 217mm (Without paper tray) Weight (without cartridge) 5.7kg
Some images are simulated for clarity of reproduction. All data is based on Canon's standard testing methods. This leaflet and the specifications of the product have been developed prior to the date of product launch. Final specifications are subject to change.™ and ®: All company and/or product names are trademarks and/or registered trademarks of their respective manufacturers in their markets and/or countries.	



Conforms to the International Energy Star program

you can
Canon

Canon Inc.
www.canon.com

Canon Europa N.V.
www.canon-europe.com

© Canon Europa NV 2007